

The logo for Fun City TURF is centered in the upper half of the image. It features the words "Fun City" in a stylized, bubbly font with a yellow-to-purple gradient and a thick black outline. Below "Fun City" is the word "TURF" in a large, bold, black, blocky font with a green grass-like border at the bottom. The background of the logo is a green, leaf-like shape. The entire logo is set against a backdrop of a large, white, arched indoor sports facility.

Fun City TURF

The background of the entire page is a photograph of an indoor soccer field. The field is covered in green artificial turf with yellow boundary lines. In the background, there are several soccer goals and a blue wall. The ceiling is a white, arched structure with many lights.

Visitor's Guide

Owned & Operated by
Greater Burlington Area Sports Facilities

ABOUT US

The FunCity Turf is a 94,000 square foot, air supported dome facility. We have shy of 80,000 square feet of Field Turf Prestige Vertex artificial turf. It is a surface that is intended to play like grass. Facility contains a concession stand, restrooms including a family restroom, mezzanine, picnic tables and vending machines.

Greater Burlington Area Sports Facilities is a private non for profit (501c3) which owns and operates the FunCity Turf. The group is made up of a local ten board of directors which oversea the Director for Sports & Facilities, who in turn oversees the day to day operation of the FunCity Turf.

Our FieldTurf field is lined for one 100 yd x 75 yd soccer field or two half fields or two 185 ft. softball/baseball fields.



POLICIES & GUIDELINES

Facility Policies & Guidelines

- No outside food or drink, including alcohol allowed in the facility
- No weapons or firearms permitted on the property
- No smoking or tobacco products including vaping products allowed in the facility
- No food or drink other than water allowed on the indoor turf surface
- No wagons or coolers allowed, unless approved by Director
- No seeds, peanuts or gum allowed on property
- No metal cleats allowed on turf. Molded cleats, turf shoes and tennis shoes allowed
- No pets allowed. Service animals allowed, provided they are clearly marked as a service animal
- No bikes, skateboards or skates allowed inside the facility
- Unruly or unsportsmanlike behavior by participants, coaches or spectators may lead to ejection from the facility. Coaches are responsible for their team's behavior
- Chairs are not allowed on the turf surface
- Do not leave doors propped open, this may affect temperature and air ventilation
- Marking, taping or painting is prohibited without approval by Director
- Use of drones must be approved by the Director
- No person shall engage in the sale or merchandise or concessions without approval by the Director
- Parking lot: Patrons are asked to park in the Turf lot before spilling over to the RecPlex lot. No overnight parking is allowed
- Lost & Found: The Turf is not responsible for lost, stolen or damaged property
- Assumption of Risk: All participants, spectators and coaches assume all risk and responsibility for loss, costs, damage or injury and assume the risk inherent with any sports activity
- Failure to follow any policies may result in ejection from the facility

Synthetic Turf Policies & Guidelines

- NO FOOD OR DRINK, EXCEPT WATER ALLOWED ON THE TURF SURFACE
- No gum, seeds, peanuts in the facility
- No metal cleats allowed. Molded cleats, turf shoes and tennis shoes allowed
- Please dispose of any garbage to the nearest receptacle
- No chairs allowed on the turf surface, please place chairs along concrete perimeter
- Marking, taping or painting is prohibited without approval from Director
- Please do not play with or purposely remove rubber infill from the turf surface
- Assumption of Risk: All participants, spectators and coaches assume all risk and responsibility for loss, costs, damage or injury and assume the risk inherent with any sports activity
- Softball/Baseball: Teams are required to stay behind dugout netting when not in game
- Please be aware of flying objects at all times
- CAUTION: Surface has sand and rubber infill, which may get into a participant's eye and/or clothing
- Failure to follow policies may lead to ejection from the property

VISITOR'S/TEAM INFORMATION

Practices

If your team would like to practice the day/week before the game please contact Andrew Ryerson at (319-671-7189) to schedule a practice time. We cannot guarantee that time will be available.

Pre-Game Warm-Up

Softball/Baseball: Pending field set up; warm up areas will be available behind left field of each field.
All pitchers must use a pitching mat when warming up
Soccer: Depending field dimensions used for event

Locker Rooms

We do not have locker rooms available at the facility. It is highly suggested that all participants come dressed for their event.

Umpires – While we do suggest coming mostly prepared, we may have a somewhat private sport for you in the vehicle air lock to change or get away from the game. It is not to be considered to be 100% private

Ticket Information

Most events taking place in the facility will be subject to an admission fees for spectators. This fee may vary depending each event and may be set by either the venue, promoter or agreed upon by both. Please check the facility Facebook page for ticketing information for each event.

Concessions

The concession stand is located on the North end of the building inside the dome. We serve items such as hot dogs, walking tacos, popcorn, nachos, edible cookie dough, cookies, candy, pizza and serve Pepsi products including Gatorade. As of June 2019, we are serving select Anheuser-Busch products. Must be at least 21 years old to purchase and drink alcohol.

Spectator Seating

We do have some picnic tables, but it is suggested that each patron brings a chair to sit on. We ask all chairs to be placed on the concrete. We do not currently allow chars on the turf surface. Patrons are more than welcome to walk between outfield fences to reach concrete on the opposite side of the complex.

We do have benches for the teams

Parking

We have parking available at the facility. If it fills up parking will be available in the Burlington RecPlex parking lot right next door. No overnight parking available. 59 new parking spots have been added on the RecPlex of Broadway Street as of September 2019. Once road work fully completed there will be sidewalk access to these spots.

Restrooms

Restrooms are located at the West end of the complex in the building inside of the dome. We have a men's women's and family restroom.

FREQUENTLY ASKED QUESTIONS

What is the Fun City Turf?

We are a 94,000 square foot facility with Field Turf artificial grass like surface. We are an air supported facility. That means we have air running/blowing nearly 100% of the time to keep us inflated. We are owned and operated by the Greater Burlington Area Sports Facilities, a 501c3 non-profit group. We are a separate entity from the Burlington RecPlex.

What is the temperature inside the facility?

Our temperature is partly based on the conditions outside of the facility. We do have heat during the winter but I do suggest dressing warmly. We are admittedly more comfortable for the competitor than the spectator during the winter months. I suggest dressing in layers.

We do not have air conditioning the facility. During these brief couple of months of warm weather, we've discovered that we do tend to stay 5-10 degrees cooler than outside (much cooler during mornings into early afternoon). We can get humid and stuffy depending weather conditions outside. As we continue towards late afternoon evening, we can match the outside temperature.

High velocity fans have been added to the dugout areas to help keep those areas cool.

What do you have for seating?

We do have some picnic tables by the concession stand and, on the mezzanine, but it is highly recommended that patrons bring their own folding/collapsible chair. Chairs may be placed on the concrete. We currently do not allow chairs on the Turf surface during tournaments.

How should I enter and exit the facility?

We have a revolving door as a main entrance and exit. We also have a set of air lock doors. These doors must be opened one at a time. Both being open at the same time will cause a rush of air to leave the facility and potentially take you with it. It's not a threat to the facility, but it could cause injury to the person not following the instructions on the doors. We highly suggest everyone that is able to, use the revolving door.

Do I need to worry about the facility collapsing?

There are many fail safes as part of the facility and even if those fail, it would take hours for the facility to fully deflate. We have a natural gas generator (power loss) and a stand by blower fan (low air pressure). Weather we have to worry about are Tornados and Heavy Snow. We will evacuate during a Tornado Warning and the facility will be closely monitored and increasingly heated during snow fall.

What is your outside food policy, as well as gum, seeds and peanuts?

We have a concession stand, we sell coffee, cappuccinos and hot chocolate as well as many other items. We take credit cards as well as cash. We take great pride in our turf so we ask that no gum, seeds or peanuts are brought into the facility. We do reserve the right to remove individuals, coaches, patrons and/or a team if rules are not followed. We ask the patrons refrain from bringing outside food and beverage into the facility. We do generally allow beverages and snacks inside for those participating.

Do you sell alcohol?

As of June 27, 2019, we sell select Anheuser Busch products. Must be at least 21 years of age to purchase and consume alcohol. We reserve the right to refuse service.

What do I need to watch for?

There may be two games or practices going on at the same time and teams warming up. When you're on the concrete surrounding the field and not behind a net, please be aware of the chances of a softball/baseball/soccer

ball coming in your direction. We do stanchion off areas close to the dugout. That is to try to keep spectators out of a line of fire of a foul liner. We are looking into adding more netting. We suggest that if you're not behind netting, stay alert of what is going on around you.

What is the parking situation like?

We have limited amount of spaces at the complex. Additional spaces have been opened up in September 2019 at the Burlington RecPlex. Street parking on one side of Broadway St. will be allowed as well. Overflow parking is allowed in the RecPlex parking lot.

Additional street parking will be available on Hinkle Drive once it opens up (Summer 2020).

Can I bring a wagon inside?

Leave them at home or in your vehicle. We run out of space quickly when they are brought in by multiple teams and parents.

Can I have my kid whom is not competing play on the Turf?

We do ask that if you are bringing additional siblings along, that they refrain from throwing objects/balls on the turf. We have had outfield fences taken out by kids playing around while a game was in play.

I see the promoter has additional rules or different rules than what the Fun City Turf releases

Each event/promoter may have rules and policies that go above and beyond our rules. One such example may be turf shoes and tennis shoes only for certain softball tournaments. The promoter may choose to add these in case to operate their tournaments in a way they feel optimizes in further eliminates possible issues. As long as they do not go directly against our policies and procedures, we will allow it.

Our full policies and procedures are listed on our website www.Greaterburlingtonsports.com as well as our Facebook page.

We are a new(ish) facility that will still have some more work done as we fine tune some things. We appreciate your cooperation and are always open to ideas and suggestions to improve your experience.

Inclement Weather

Weather will be monitored by the Game Operations staff

In the Event of a Tornado Watch...

- A discussion will be had with the promoter of the event and teams about plans in case of the watch turning into a Tornado Warning.
- A PA announcement will be made making those aware of the Tornado Watch and the plan in case that watch turns into a Tornado Warning.

In the Event of a Tornado Warning

- All games or practices will be stopped
- A PA announcement will be made to evacuate the facility
- We are not rated as a tornado shelter, thus must evacuate the facility

Directions

From Des Moines

- Use IA-163 E/E University Ave.
- Continue on IA-163 E,
- Continue on US 63 S,
- Merge onto US 218 S/US-34 E
- Use the right lane to take the ramp to Burlington
- Merge onto US34 E/ E Washington St.
- Take exit 260 for Gear Ave.
- Turn left on Gear Ave.
- Turn left onto Division St.
- Turn right onto Broadway St.

From Davenport/Quad Cities

- Use US-61 South
- Turn right at E. Agency Rd
- Turn left onto Broadway
- Follow until you reach FunCity Turf

From Chicago

- Use I-88 West
- Merge on I-80
- Continue onto I-74
- Take ramp to US-34 W
- Take ramp to US-61S/N. Roosevelt
- Turn right onto E. Agency
- Turn left on Broadway St.
- Follow until you reach FunCity Turf

From St. Louis

- Use I-70
- Take ramp to US-61 North
- Turn left on West Avenue
- Keep/turn right at roundabout to access West Burlington Ave.
- Turn left on Division St.
- Turn left on S. Broadway St.
- Follow until you reach FunCity Turf

From Kansas City

- Use I-35 N
- Take ramp to US-36 E
- Turn left onto US-61 N
- Turn left on West Avenue
- Keep/turn right at roundabout to access West Burlington Ave.
- Turn left on Division St.
- Turn left on S. Broadway St.
- Follow until you reach FunCity Turf

From Minneapolis

- Use I-35 South
- Take ramp to US-18 East
- Continue on US-218
- Continue on I-380
- Continue on US-218
- Take ramp to US -34 East
- Take Ramp to S. Gear Ave.
- Turn left onto S. Gear Ave.
- Turn left on Division St.
- Turn right on S. Broadway St.
- Follow until you reach FunCity Turf

Note: We do suggest going through a proper GPS/map system for full driving instructions as the instructions listed above may not include every exact detail of the trip.

AREA INFORMATION

HOTELS (ALPHABETIC ORDER)

The Greater Burlington Area Sports Facilities greatly appreciates the partnerships we have formed with the hotels listed below. We encourage that guests visiting our city and facility to stay at one the properties listed below. Staying at these wonderful places helps supports the Turf!

AmericInn by Wyndham

628 S. Gear Ave.
West Burlington, IA 52655
Phone: 319-576-0137
Website: wyndhamhotels.com
54 rooms, 9 suites available

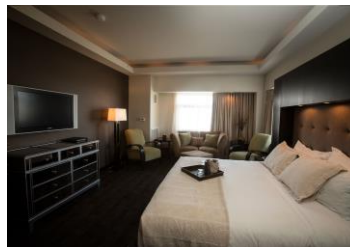


Enjoy all that Southeastern Iowa has to offer at AmericInn West Burlington, conveniently located off US-34 and US-61, and just a short drive from the Burlington Amtrak station. With easy access to General Electric corporate offices, Great River Medical Center, 34 Raceway, and Southeastern Community College, our hotel is the perfect choice for a comfortable stay in West Burlington. Whether you're visiting family, here for business, or just passing through, you'll find comfortable quarters at our hotel.

Feel at home when you're away with quiet guest rooms and a variety of amenities. Each room features a flat-screen TV, mini-refrigerator, microwave, iron and ironing board, and hair dryer. You can also book a suite with a whirlpool or fireplace. Start your day off right with our free homestyle buffet breakfast and stay connected with free WiFi throughout the hotel. When it's time for a break, take a dip in our indoor pool and hot tub, and relax while the kids enjoy our play area.

Catfish Bend Inn & Spa

3001 Winegard Dr.
Burlington, IA 52601
Phone: 319-753-2943
Website: thepzazz.com
40 rooms, 3 suites available



Featuring over 40 luxury hotel suites, Catfish Bend Inn & Spa includes complimentary breakfast. Stay and Play casino packages and deluxe spa packages are available! Must be 21 or older.

IN EVERY ROOM...Free HBO access, 50" LED television, Business center, Glass walk-in showers, Stainless steel mini fridge, In-room hair dryers, Meeting/board room, Private outdoor pool & patio, Full service fitness center, Service to/from the airport, High speed internet, IPOD/MP3 player, Plush robes and wraps, Free Burlington Bees baseball tickets, Free USA Today newspaper

Located in the Catfish Bend Casino/Pzazz Entertainment Complex

Comfort Suites Hotel

1780 Stonegate Center Dr.
Burlington, IA 52601
Phone: 319-753-1300
Website: comfordsuites.com
86 rooms, 86 suites available



It doesn't matter if you're here at our spacious hotel in Burlington, IA for business or pleasure, we have got you covered when you stay at the Comfort Suites®.

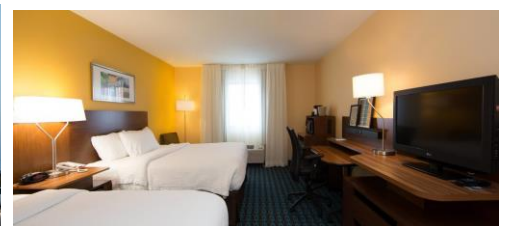
Amenities include: Free WiFi, Free hot breakfast, Free parking, Indoor heated pool and hot tub, Fitness center
Guest rooms feature: Microwave and refrigerator, USB ports, Premium bedding, Coffee maker, Flat-panel TV

Conveniently located right off Highway 61, our suite hotel in Burlington, IA gives you easy access to the "Crookedest Street in the World," Snake Alley (according to Ripley's Believe It or Not) and other great attractions like:

Westland Mall, Fun City, Southeast Iowa Regional Airport, Port of Burlington Welcome Center, Art Center of Burlington

Fairfield Inn & Suites

1213 N. Roosevelt
Burlington, IA 52601
Phone: 319-754-000
Website: fairfieldinn.com/brlfi
60 rooms, 16 suites available



Our friendly staff welcome you to our hotel in Burlington, Iowa. We are conveniently located off of Hwy 34 and Hwy 61 across the street from the FunCity water park and Catfish Bend Casino. We are minutes away from the Westland Mall, Crapo Park, Burlington Memorial Auditorium and the Arts for Living Center, 2 miles from Southeastern Community College, The Southeast Iowa Regional Airport and downtown Burlington. Check out the Burlington Regional RecPlex, Snake Alley, 34 Raceway, Port of Burlington Welcome Center historic building, Starr's Cave Park and Preserve, Big Hollow Creek Recreation Area and Community Field ballpark, home of the Burlington Bees minor league baseball team. Make plans to stay with us during the annual Burlington Steamboat Days Music Festival, Midwest Old Threshers Reunion or the Tri-State Rodeo. At the Fairfield Inn & Suites Burlington, you're our #1 priority. We promise you'll be satisfied, or we'll make it right. That's our commitment to you. Ask us about The Fairfield 100% Guarantee.

Hampton Inn & Suites

3001 Winegard Dr.
Burlington, IA 52601
Phone: 319-237-0700
Website: Hampton.com
69 rooms available
OPENED JUNE 2018



Welcome to Hampton Inn & Suites Burlington, set at the junction of Highways 61 and 34. Our hotel has a prime location on the entertainment campus of FunCity and the Catfish Bend Casino, giving guests quick access to the convention center, an indoor/outdoor water park and several restaurants and lounges. Business travelers will love our proximity to Iowa Fertilizer, Federal-Mogul, GE and other major offices.

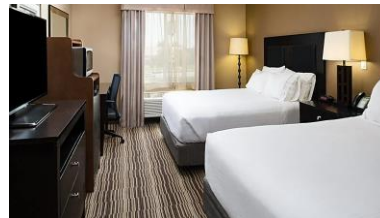
Each guest room features free WiFi, a 43-inch HDTV, microwave, mini-fridge and coffeemaker. Get work done at the desk with ergonomic chair and count on a great night's sleep on the clean and fresh Hampton bed®. Studio suites are a nice option for family stays – offering more space and extras like a sofa bed and wet bar – and we also have connecting rooms.

Start the morning with a free hot breakfast of freshly baked waffles, bacon, eggs, oatmeal, fruit and other tasty options. Grab a free Hampton's On the Run™ Breakfast Bag on Monday-Friday or stop by the Suite Shop for drinks, snacks and any forgotten travel items.

We have plenty of thoughtful amenities for your stay like a heated indoor pool, fitness center, business center, guest laundry room, and 24-hour coffee/tea service in the lobby. Host meetings for up to 8 colleagues in our stylish boardroom.

Holiday Inn Express Hotel & Suites

1605 N. Roosevelt
Burlington, IA
Phone: 319-752-000
Website: holidayinnexpresshotelburlington.com
76 rooms, 21 suites available



You're always welcome at the Holiday Inn Express Hotel & Suites Burlington. We are located close to several businesses including: Federal Mogul, Vista Bakery, IPC Inc., General Electric, Case New Holland, US Gypsum, American Ordnance, Lamont Limited, and many more. When staying at our hotel, you are located next to several area attractions. Ripley's Believe It or Not has dubbed Snake Alley 'The Crookedest Street in the World. Some of the other local attractions include: Fun City & Casino, 34 Raceway, Crapo Park, Burlington Bees Baseball, Lock & Dam #18, Memorial Auditorium, and much more.

We have designed the Holiday Inn Express Hotel & Suites with every guest in mind. We have spacious standard rooms, as well as king suites, two-room family suites, and luxurious jacuzzi suites. All of our rooms include free High Speed Internet access, complimentary local calls, two phone lines, voice mail, coffee makers, hair dryers, irons and ironing boards. We also offer complimentary High Speed Wireless Internet access in all public areas. When visiting Burlington, Iowa Stay Smart at the Holiday Inn Express Hotel & Suites.

FunCity Resort Hotel

3001 Winegard Dr.
Burlington, IA 52601

Phone: 319-753-2946

Website: thepzazz.com

145 rooms, 14 suites available (Family Room style with Bunk Beds available)
NEWLY RENOVATED ROOMS OPENING OCTOBER 2021



Featuring an on-site spa, casino, and indoor waterpark, this Burlington, Iowa resort has several restaurants and free Wi-Fi access. The family-friendly Pzazz Resort and 21 and over Catfish Bend Inn & Spa are 5 minutes' drive east from The Mississippi River and Illinois/Iowa border.

Cable TV is included in every air-conditioned room at The Pzazz Resort. Complete with a microwave, rooms are also equipped with a refrigerator. Featuring a shower, private bathrooms also come with a hairdryer and towels.

There are several dining options at Burlington Pzazz Resort, including a 1950s diner, surf and turf at Edgewater Grille, or dinner and dancing at The Boogaloo Café.

Catfish Bend Casino is on site and features table games, poker, slots, and more. Guests can make use of the fitness center during their stay or enjoy massage treatment and a sauna at the spa.

GREATER BURLINGTON, IOWA PREFERRED PARTNER HOTELS

Thank you for choosing to participate in an event in Burlington / West Burlington, Iowa. When selecting your lodging accommodations, we ask that you first consider our Preferred Partner Hotels. Please contact the property to make your team's arrangements.



AmericInn Lodge & Suites
628 S Gear Ave, West Burlington
319-758-9000 americinn.com
54 rooms, 9 suites available



Hampton Inn & Suites
3001 Winegard Dr, Burlington
319-237-0700 hampton.com
69 rooms



Catfish Bend Inn & Spa
21+ property
3001 Winegard Dr, Burlington
319-753-2946 thepzazz.com
40 rooms, 3 suites available



Holiday Inn Express Hotel & Suites
1605 N Roosevelt, Burlington
319-752-0000
hiexpress.com/burlingtonia
76 rooms, 21 suites available



Comfort Suites Hotel
1780 Stonegate Center Dr, Burlington
319-753-1300 choicehotels.com
86 rooms, 86 suites available



PZAZZ! Resort Hotel
3001 Winegard Dr, Burlington
319-753-2946 thepzazz.com
145 rooms, 14 suites available



Fairfield Inn & Suites
1213 N Roosevelt, Burlington
319-754-0000 fairfieldinn.com/brlfi
60 rooms, 16 suites available



KEY:



Indoor Pool



Complimentary Breakfast



Whirlpool / Sauna



Shuttle Service



Restaurant / Bar



Fitness Equipment

Check out VisitBurlingtonIowa.com for a list of events taking place while you are in the area.

610 N 4th Street Suite 200 | Burlington, IA 52601 | 319-752-6365
clerud@greaterburlington.com | VisitBurlingtonIowa.com



TRANSPORTATION

Car Rentals

Enterprise Rent-A-Car 319-754-1500
2209 N. Roosevelt Ave.
Burlington, IA 52601

Avis Car Rental 319-754-5187
2501 Summer St.
Burlington, IA 52601

Railway

Amtrak
300 South Main Street
Burlington, IA 52601
California Zephyr (Chicago to San Francisco)

Amtrak
1601 20th Street
Fort Madison, IA 52627
Southwest Chief (Chicago to Los Angeles)

Surrounding Airports

Southeast Iowa Regional Airport (4.3 miles)

- Airlines: Air Choice One

Quad City International Airport (76.7 miles)

- Airlines: Allegiant, American, Delta & United

Eastern Iowa Airport (95.6 miles)

- Airlines: Allegiant, American, Delta, Frontier & United

Des Moines International Airport (165 miles)

- Airlines: Allegiant, American, Delta, Frontier, Southwest & United

Charter Companies

Burlington Trailways
906 Broadway
West Burlington, IA 52655
319-752-5453

RESTAURANTS

The Greater Burlington Area Sports Facilities greatly appreciates the following restaurants who have supports our facility by being donors to the project, sponsors or partnering up in order to make this place happen.

Note: Large groups please call ahea

The Boogaloo Sports Bar & Grill

Located in Pzazz Resort/FunCity
3001 Winegard Dr.
Burlington, IA 52601
Phone: 319-753-2946
Web: thepzazz.com/dining-entertainment/

Buffalo Tavern

2016 S. Main St.
Burlington, IA 52601
Phone: 319-754-4338
Web: thebuff.net

Buffalo 61 Bar & Grille

6111 Reve Ct.
Fort Madison, IA 52627
Phone: 319-372-5022
Web: thebuff.net

Domino's Pizza

3200 E. Agency
Burlington, IA 52601
Phone: 319-752-3030
Web: Dominos.com

The Drake Restaurant

106 Washington St.
Burlington, IA 52601
Phone: 319-754-1036
Web: thedrakerestaurant.com

Dunn Brothers Coffee

1105 Lawrence Dr.
Burlington, IA 52601
Phone: 319-237-8990
Web: DunnBrothers.com

Edgewater Grille

Located in Pzazz Resort/FunCity
3001 Winegard Dr.
Burlington, IA 52601
Phone: 319-753-2946
Web: <https://www.thepzazz.com/dining-entertainment/>

Gasoline Allie's

Located in Pzazz Resort/FunCity
3001 Winegard Dr.
Burlington, IA 52601
Phone: 319-753-2946

Hy-Vee Cafeteria/Kitchen

3140 Agency St.
Burlington, IA 52601
Phone: 319-753-1616

Jimmy John's

3310 W. Agency Rd. Ste. A
Burlington, IA 52601
Phone: 319-752-9000
Web: jimmyjohns.com

McAlister's Deli

3180 East Agency St.
Burlington, IA 52601
Phone: 319-576-5511
Web: mcalistersdeli.com

McDonald's

900 Wellshire Drive
Burlington, IA 52601
319-754-8279

McDonald's

1725 N. Roosevelt Ave
Burlington, IA 52601
Phone: 319-753-2111

Subway

116 W. Agency Rd.
West Burlington, IA 52655
Phone: 319-753-2200
Web: Subway.com

Subway

1716 N. Roosevelt Ave.
Burlington, IA 52601
Phone: 319 752-1500
Web: Subway.com

Subway

1111 Division St.
Burlington, IA 52601
Phone: 319 752-1500

RESTAURANTS (CONT.)

The Greater Burlington Area Sports Facilities greatly appreciates the following restaurants who have supports our facility by being donors to the project, sponsors or partnering up in order to make this place happen.

Note: Large groups please call ahead

Teriyaki Madness

1035 Lawrence Dr. #108

Burlington, IA 52601

Phone: 319-753-2695

Web: order.teriyakimadness.com/menu/burlington

Wake N Bake Breakfast Co.

713 Jefferson St.

Burlington, IA 52601

Phone: 319-754-0494

Web: wakenbakebreakfast.com

More sponsors to come!!!!